

# NEWSLETTER



# The Forest Family

## Awards

2nd December 2022

### ALL SAINTS

Class 1: **Clara** Class 2: **Oliver H** Class 3: **Ray** Class 4: **Fatimah**

Badges: ★ **Joseph H (Bronze Star)**

Headteacher awards: **Archer C, Alaynah A, George C-H, Clara P**

### NEEDWOOD

Class 1: **Joshua** Class 2: **Orla** Class 3: **All of Year 6**

Badges: ★ **(Green Star)** ★ **(Bronze Star)**

Headteacher awards: **Jasmine S, Alfie H, Poppy K, Alexander G, Isabella P, Ava A, Francesca P**

Dear Parents,

The busy Christmas season has begun in earnest this week! Well done to the children of both schools who attended the JTMAT Christmas Concert yesterday at John Taylor High School. They represented our schools wonderfully.

At Rangemore today we have been enjoying Christingle and Carols in Church, as well as the Christmas Market after school. It has been a wonderful start to December, thank you to our parents for supporting the service and Christmas market. A big thank you to the PTA who have been busy setting up the market and have also been running the wreath-making workshops in Church. We are so grateful!

Next Friday we are looking forward to Christingle and Carols at Needwood, then the PTA fundraiser afterwards. We hope you can join us in Church and back at school.

Have a great weekend,

Best Wishes

**Mr Baxter**

## ATTENDANCE

### ALL SAINTS

CLASS 1 - 92%

**CLASS 2 - 93%**

CLASS 3 - 92%

CLASS 4 - 89%

### NEEDWOOD

**CLASS 1 - 96%**

CLASS 2 - 90%

CLASS 3 - 93%

**WELL DONE EVERYONE**

# IMPORTANT INFORMATION

## DIARY

### ALL SAINTS

13.12.22 9.30 am 2.00 pm	KS1 AND RECEPTION NATIVITY PLAY SCHOOL HALL
14.12.22	CHRISTMAS LUNCH
15.12.22	WEAR CHRISTMAS JUMPER
15.12.22	PANTOMIME ENRICHMENT DAY
16.12.22	FINAL WORSHIP
3.1.23	BACK TO SCHOOL
9.1.23	YOUNG VOICES

### NEEDWOOD

9.12.22 1.45 PM	CHRISTINGLE/CAROL SERVICE CHURCH
9.12.22	PTA XMAS FUN—AFTER SCHOOL
12.12.22	BOOGIE WOOGIE NATIVITY - PERFORMANCES AT 1.30PM AND 5.30PM
13.12.22	CHRISTMAS LUNCH
15.12.22	ENRICHMENT DAY
15.12.22	NW PTA CHRISTMAS DISCO 3.30—5.30
16.12.22	FINAL WORSHIP
3.1.23	BACK TO SCHOOL
9.1.23	YOUNG VOICES
12.1.23	RECEPTION/YEAR 6 WEIGHT AND MEASURES
16.1.23	YEAR 5 BIKEABILITY
18.1.23	YEAR 4 BIKEABILITY

### CHRISTINGLE

We look forward to our Christingle and Carol service in Church today for Rangemore and Friday 9<sup>th</sup> December for Needwood.

### NEEDWOOD

Please can we ask all children to bring in an orange and sweets/dried fruit from home to make their Christingles on this day.

Please can the orange and sweets be brought into school in a sealable bag (e.g sandwich bag) with your child's name on it **(on the Thursday before)**.

**To make a Christingle donation for the Children's Society please follow the links below:-**

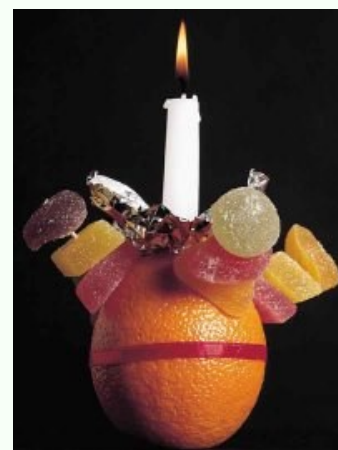
### RANGEMORE

<https://www.childrenssociety.org.uk/christingle/all-saints-primary-school-rangemore-0>

### NEEDWOOD

<https://www.childrenssociety.org.uk/christingle/needwood-ceva-primary-school>

Thank you for your support.



## NEEDWOOD—YEAR 6 WEEKLY ROUND UP

Some of our Year 6 pupils have written a summary of the exciting events they have taken part in this week—we hope you enjoy reading their articles!

### The Pantomime

"On Wednesday, a brilliant travelling pantomime company came to school to perform *Sleeping Beauty*. The show was spectacular even though there were only three actors playing all the parts. The Panto was very interactive as the actors got the children involved in playing some of the parts, such as fairies and squires. We had a fantastic time and enjoyed watching the amazing actors perform in the Panto."

**By Daisy and Ella R—Year 6**

### THE JT MAT CONCERT

"The JT MAT concert included 11 schools, with 165 children in the choir. We sang 9 songs and had 2 concerts, the first one was 5-6pm and the second was 6.30-7.30pm. A warm lunch (tomato pasta or meatballs and pasta with a cookie) was provided. We ate a packed dinner just an hour before the concert and the staff provided us with biscuits and juice. Best of all, while we were rehearsing we got a magical surprise from Santa himself with chocolate for everyone!"

**By Jasmine and Poppy—Year 6**





At National Online Safety, we believe in empowering parents, carers and trusted adults with the information to hold an informed conversation about online safety with their children, should they feel it is needed. This guide focuses on one platform of many which we believe trusted adults should be aware of. Please visit [www.nationalonlinesafety.com](http://www.nationalonlinesafety.com) for further guides, hints and tips for adults.

## What Parents & Carers Need to Know about

# NETFLIX

Netflix is a subscription-based streaming service that allows users to watch TV shows and movies on any internet-enabled device that supports the software, such as smart TVs, phones and tablets. The pandemic saw a surge in children consuming on-demand content as many families relaxed their screen-time rules. Netflix's diverse range of programming caters for all age groups – so it's important for parents to recognise the potential risks of children using the service and the measures to help their child enjoy a safe streaming experience.

### INAPPROPRIATE CONTENT

Netflix produces and curates an extensive catalogue of content that can provide hours of entertainment. If they share the same user account as an adult, this can potentially lead to children accidentally viewing all manner of inappropriate content, including nudity, profanity and extreme violence. This can happen easily on shared accounts, as Netflix cannot establish who's watching.

### BINGE-WATCHING

Netflix allows users to view shows and movies quickly and easily without adverts or interruptions, making excessive screen time a concern. Binge-watching has become more common during the pandemic, due to Netflix's regularly updated content and algorithms which recommend content very similar to what's previously been enjoyed. Marathon viewing sessions can lead to children staying up too late, affecting their mood and concentration the next day.

### SCREEN ADDICTION

From TVs and phones to consoles and tablets, Netflix is available on almost any device with an internet connection – making it extremely difficult to manage children's screen time. The service is now adding games to its mobile app, tempting users to spend even more time on the platform. Screen addiction can distract children from important activities like schoolwork and socialising, and can impact their health by reducing their exercise and sleep.

### HACKING ATTEMPTS

With millions of users worldwide, Netflix is often targeted by hackers who try to steal usernames and passwords to gain access to people's accounts. If successful, they can then steal payment details or try to sell stolen personal data on the dark web, providing other criminals with a profitable opportunity. Netflix also doesn't provide two-factor authentication, making the hackers' task that little bit easier.

### CONTACT FROM STRANGERS

Netflix's Teleparty feature became popular during lockdown periods as it allows users from different households (friends and relatives, for example) to synchronise when they watch content. It requires an access link to be sent to the people you wish to invite: the link, however, can also be distributed to people you don't know. A text chat feature enables interaction with the other users in real-time: this represents a risk to children if a stranger gains access to the Teleparty.

## Advice for Parents & Carers

### KEEP ACCOUNTS SECURE

Netflix doesn't use two-factor authentication, so a strong password is vital. Your child's Netflix password should be unique (not one they've used elsewhere) and a minimum of eight characters with a mix of letters, numbers and symbols. Emphasise not to share their login details with anyone and remind them to always log out after using the app – so their account remains inaccessible, even if their device is lost or stolen.

### SET UP PROFILE PINS

Netflix account holders can lock profiles using a four-digit PIN. Doing this can prevent your child from accessing the wrong account and viewing content that isn't appropriate for their age. Try setting a PIN for each account on your Netflix app – ideally avoiding numbers that would be easily guessed, such as dates of birth. Remember not to share these PINs with anyone, including family.

### CHECK MATURITY RATING

Netflix warns about content that includes violence, sex, profanity and nudity. These warnings form part of the show or movie's 'maturity rating'. Users can restrict age ratings to avoid children viewing age-inappropriate content. On their profile, open the Profile and Parental Control settings and choose the maturity level for the shows and movies you want to allow.



### CREATE A KIDS' PROFILE

Setting up a Netflix Kids experience profile means your child can only access content which is suitable for children aged up to 12 years. All other content is automatically blocked. This rating can be further restricted via the child's profile settings. Setting up a Netflix Kids experience profile will help to prevent your child from viewing age-inappropriate content.



### SWITCH OFF AUTO-PLAY

When a show or movie concludes, Netflix's algorithms select content with similar themes that it thinks your child will enjoy next. This new content starts automatically after a 10-second countdown. Disabling this auto-play feature reduces the possibility of your child being shown something inappropriate and provides a natural break to help prevent them becoming too immersed in Netflix.

### CHECK VIEWING HABITS

Netflix has tools which enable parents and carers to monitor what their child has been watching. Selecting 'Viewing Activity' in each profile's account settings displays a list of what content has been viewed (and when). This can reassure parents that their child is watching age-appropriate content and can open avenues for discussing your child's favourite shows and movies, and why they like them.



### Meet Our Expert

Dr Claire Sutherland is an online safety consultant, educator and researcher who has developed and implemented anti-bullying and cyber safety policies for schools. She has written various academic papers and carried out research for the Australian government comparing internet use and sexting behaviour of young people in the UK, USA and Australia.



**NOS**  
**National Online Safety®**  
#WakeUpWednesday

Sources: [www.netflix.com](http://www.netflix.com) | [www.aboutnetflix.com](http://www.aboutnetflix.com) | [www.ofcom.gov.uk](http://www.ofcom.gov.uk)



[www.nationalonlinesafety.com](http://www.nationalonlinesafety.com)



@natonlinesafety



/NationalOnlineSafety



@nationalonlinesafety

Users of this guide do so at their own discretion. No liability is entered into. Current as of the date of release: 10.11.2021



## COMMUNITY



Monday, 19th December - Winter Robin  
 Tuesday, 20th December - Highland Cow  
 Wednesday, 21st December - New Forest Pony  
 Thursday, 22nd December - Winter Wonderland  
 9.30am to 1.30pm (inc. Refreshment and snacks)

*Children will be using a variety of tools to create interesting marks, palette knives, sponges and mediums, especially glass beads for snow flakes. They will also use different makes of acrylic paints to add colour and variety.*

*The children might want to do this as chance to make a special Christmas Gift for a loved one. There are no mistakes in art!*

**BOOK EARLY!  
 PLACES ARE LIMITED**

**Venue:**  
 The Coach House  
 South Hill  
 Rolleston on Dove  
 DE13 9AJ

**To Book Contact:**  
 Sheena Barry on 07813 189 908  
 or email: sheenabarry@hotmail.com

**Cost:**  
 £25 includes all your paint, brushes and canvas and refreshments.

Paints and brushes will be available for use, but if you have your own, please bring them.  
 Don't forget your art apron/smock or shirt too!

\*Bookings on a first come first serve basis - payment is on booking by card/late cancellation fee £5.00.

Sheena Barry is Fully Qualified Primary Teacher (B.Ed, DBS certified, First Aid), Author, Artist and Musician over 18 years teaching EYFS & Primary all age school children in Staffordshire.  
[www.sheenabarryartist.co.uk](http://www.sheenabarryartist.co.uk)

## CHILDREN AND ADULT ART WORKSHOPS



Friday, 9th December 2022 Winter Robin  
 Friday, 23rd December 2022 Winter Wonderland  
 9.30am to 3.30pm (inc. mulled wine and mince pies - only £50.00)

Monday, 12th December 2022 Acrylic Taster  
 9.30am to 11.30am (simple short lesson - £30.00)

*A fun introduction to learning how to paint with acrylics.  
 You'll be using various mediums, brushes and tools to create interesting marks.*

*Whether you'd like to try this out or perhaps have in mind to give your finished artwork as a gift - come and have a go.  
 There are no mistakes in art!*

**BOOK EARLY!  
 PLACES ARE LIMITED**

**Venue:**  
 The Coach House  
 South Hill  
 Rolleston on Dove  
 DE13 9AJ

**To Book Contact:**  
 Sheena Barry on 07813 189 908  
 or email: sheenabarry@hotmail.com

**Cost:**  
 £30/£50 includes all your paint, brushes and canvas and refreshments.

Paints and brushes will be available for use, but if you have your own, please bring them.  
 Don't forget your art apron/smock or shirt too!

\*Bookings on a first come first serve basis - payment is on booking by card/late cancellation fee £5.00.

Sheena Barry is Fully Qualified Primary Teacher (B.Ed, DBS certified, First Aid), Author, Artist and Musician over 18 years teaching EYFS & Primary all age school children in Staffordshire.  
[www.sheenabarryartist.co.uk](http://www.sheenabarryartist.co.uk)

## THE BIG SWITCH ON SAVE THE DATE 4TH DECEMBER 2022

Come along and join us for the big switch on of our Community Christmas Tree at 6pm on Sunday 4<sup>th</sup> December at Tatenhill Village Hall. The Village Hall will be open from 4pm onwards for the creation of Christmas baubles and writing letters to Santa.

Colour in your own bauble and add it to the tree. There will also be the opportunity to write a letter to Santa and get a reply from the North Pole. (small charge).

We will have free refreshments including soft drinks, mulled wine and mince pies.

Bring your friends, family, children and grandchildren. Children of all ages are welcome as long as they bring a responsible adult with them.



*Disclaimer: We are proud to have a newsletter which shares information with you for our parish, village, WI, social club, Rascals and our local communities. We do try to vet all items which go into School information can be provided in different languages, large print, simple text only or Braille. Please speak to Mr Baxter if you have a particular requirement.*

