



HEADTEACHER'S AWARDS

Jessica L, Alice B, Billy, Cal, Oscar, Bonnie, Harris B,

Red
Ray, Samuel R

★ Bronze

★ Silver

★ Gold



Bronze Cup
Alice F



Silver Cup

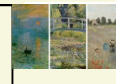
Gold Cup



Bronze Medal



Johan for exceptional determination to apply his phonics during one to one reading this week.



Ella G for consistently working hard, being kind and compassionate and producing some excellent instructions during English.



Ethan for showing courage and bravery in lessons this week, particularly whilst learning about adverbial phrases. You've made progress in your knowledge and skills. Well done!



Isaac W for showing a consistently good effort and determination to improve. You have made a great start to class 4 and make great learning choices. Keep it up.

OFFICE CONTACT DETAILS

Please find below email addresses for the office if you have any queries. Save them in your contacts and then they are always handy for you to find.

asr-office@asr.jtmat.co.uk
e.hunt@asr.jtmat.co.uk

DIARY DATES

9.12.20 PTA	CHRISTMAS CELEBRATION DAY
9.12.20	CHRISTMAS LUNCH
11.12.20	CHRISTMAS JUMPER DAY
14.12.20	FLU VACCINATIONS
17.12.20	CHRISTMAS PARTY LUNCH

WEEK COMMENCING 23.11.2020

Monday	
Tuesday	
Wednesday	
Thursday	
Friday	CHRISTINGLE SERVICE VIA ZOOM 2.30 PM

Psalm 23:6

Surely goodness and mercy shall follow me all the days of my life, and I shall dwell in the house of the LORD forever



THIS WEEK IN FOCUS

Mama Mercy Vineyard



What a fantastic week!

Children have had a positive week of learning enjoying reflecting on International Children's Day where we learnt a little bit more about our global link schools (it's early days and we have a lot to learn). They also wrote letters and drew pictures to send and we hope this is the beginning of a long lasting relationship!

Next week we look forward to a stable week of learning culminating in our Christingle service – please see more information and how to donate on the next page.

Children had a lovely time dressing up for Football Shirt Friday.

We hope that you have a lovely weekend.

Mrs C Gethin.



There can be no keener revelation of a society's soul than the way in which it treats its children."

Nelson Mandela.



WE ARE LOOKING FORWARD TO -

CHRISTINGLE

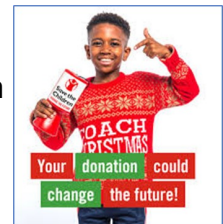
We look forward to our **virtual Christingle service on Friday 27th November at 2.30pm**. This will be instead of celebration worship and will be across the Forest Family. It will include Christingle music, videos and the children will be making their Christingles live so you can watch this too, you may like to make one at the same time! We hope you can attend.



This year, our Christingle Collection will be a little different. As we will be unable to collect cash we are requesting that you make your usual donation to the Children's Society via the attached link— <https://thyg.uk/CUS020680>. Thank you for your support.

CHRISTMAS JUMPER DAY

Christmas Jumper Day is on **Friday 11th December**. We will again, be unable to collect the usual Christmas Jumper donation of £1, and request you donate to Save the Children via the following link <https://www.justgiving.com/fundraising/cjd200009159>



CHRISTMAS CARDS

We are allowing children and staff to still bring in Christmas cards for their colleagues / friends but they will only be collected and delivered once due to quarantine, so, can you ensure that they come in the week of the **7th December** and will be delivered at the end of the following week. Thank you.

USEFUL INFORMATION

SCHOOL OFFICE

During lockdown on Tuesdays and Thursdays the school office will be manned remotely. Please use the following email and your query will be dealt with or forwarded to the appropriate person, e.hunt@asr-jtmat.co.uk. On Mondays, Wednesdays and Fridays if no-one answers the phone please leave a message and your query will be dealt with. Email and telephone are still our preferred method of contact and we will do our very best to get back to you as soon as we can. Thank you.

PLEASE CONSIDER

COVID-19 TESTING IN STAFFORDSHIRE

You may have seen in the news recently that Staffordshire will be increasing the testing of residents in a bid to identify more cases of Covid-19 and reduce the spread of infection.

Staffordshire are one of several local authorities to sign up for early roll out of new rapid turnaround tests, and there may be an opportunity to use these in sixth forms for schools and colleges.

They are also expanding their advice around when to get a test.

Currently anyone who has one of the main symptoms of persistent cough, high temperature, new cough or loss of taste or smell must self-isolate immediately and book a test.

However, with many people displaying other symptoms, the authority are asking residents in Staffordshire to consider getting tested as a precaution if they have other symptoms such as:

- Headaches
- Aches and pains
- Feeling very tired for no good reason
- Sore throat
- Runny nose
- Sneezing
- Sometimes 'tummy ache' in children

People with any of these symptoms can carry on going to school or work if they are well enough to do so and only need to self-isolate if the test comes back positive.

The authority want to ensure as many people as possible consider getting a test, even if it is merely a precaution.

The national testing centres across the county have good availability, and can be booked through the NHS website.

People booking a test through this website need to check the **'My council has asked me to get a test'** option.

There are also community testing sites that change on a weekly basis. People can view if there are any sites set up near them by visiting the testing website.

<https://www.staffordshire.gov.uk/Coronavirus/Home.aspx>



ANYTHING ELSE YOU NEED TO KNOW

LUNCHES

Next week's menu will be:-

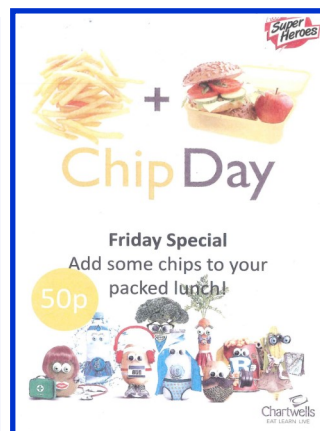
Monday	Pizza
Tuesday	Sausage and Mash
Wednesday	Roast Turkey or Quorn
Thursday	Beef Lasagne
Friday	Golden Fish Fingers and Chips

We are able to offer either a hot lunch, jacket potato or sandwiches.

CATERING SPECIALS

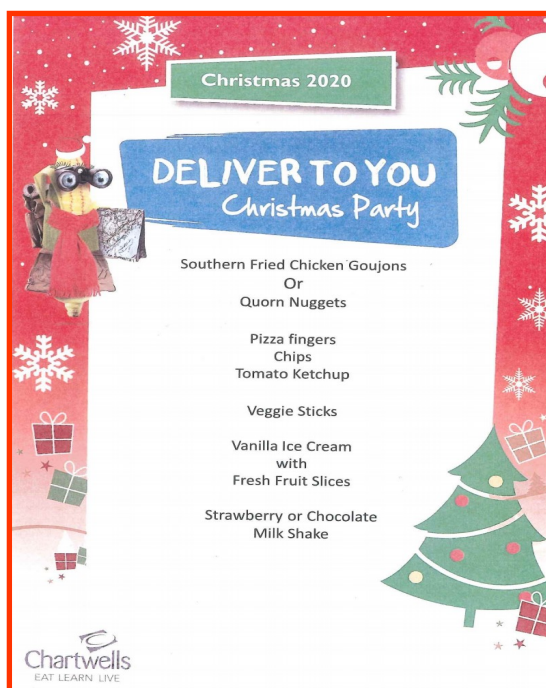
On a **Tuesday** and a **Thursday** anyone having a school dinner will have the option to have a free milk shake.

On a **Friday** if you have your own packed lunch, for 50p you can have a plate of chips to go with it. If you want this please send your child with 50p on the Friday and ask them to tell the teacher when dinner orders are being taken.



CHRISTMAS DINNER AND CHRISTMAS PARTY LUNCH

Please let the office know whether or not your child would like a Christmas Lunch/Christmas Party Lunch. We need to know numbers to make sure we order the right amount of food for everyone. Please reply to e.hunt@asr.itmat.co.uk (even if your child does not want these).



BREAK SALES

Our Catering team are offering break sales.

Please make sure you send a completed form (**attached to the newsletter**) with the correct money into school in an envelope with your child's name and class on it. Please order for the whole week on a **MONDAY ONLY**. **If you are unable to print a form off just write the order on a piece of paper.** Unfortunately they cannot accept any alterations to this on a different day.



By the time Forest School started it was a beautiful, sunny autumn day. The children were most creative. A number of them made some fabulous acorn men.



We had some incredible useful new objects thanks to Mrs Tipper and Mr Fairbrother - thank you so much. Mud kitchens/tables, seating bench, new welly storage and portable handwash station, we are so very lucky and these have made the Forest School experience so much easier. 😊



More use of the bow saw, tyre swinging and of course a bit of tree climbing. ○
Next week we are helping plant some trees over the road at the playing fields and we are all very much looking forward to it.



asr-pta@asr.jtmat.co.uk

IT'S ALL ABOUT CHRISTMAS

As there **WILL NOT** be a Christmas Fayre with the normal tombolas, wine stall or refreshment room this year due to Covid19 restrictions, we are having a **Christmas Celebration Day** within school hours on 9th December. **Please see the attached flyer.**

Raffle Tickets

By now you will all have received 2 books of raffle tickets for the Grand Christmas Raffle. These can be returned and placed in the box near the front door once completed. If paying on ParentPay please remember to have a corresponding name on the raffle stubs. Just to clarify the 2nd prize is actually a **Barrow (wheelbarrow) of Booze** NOT a Barrel as incorrectly stated on the tickets.

Christmas Wreaths – Tuesday 1st December

As per last year we will be selling a selection of beautiful Christmas Wreaths in seasonal green, dried or wood priced from £10-£15. These can be pre-ordered by completing the form sent on 10th November and returned to asr-pta@asr.jtmat.co.uk.

Any dried twigs, foliage, cones, feathers etc would be greatly appreciated going towards the creating of the wreaths before **Wednesday 18th November or greenery, foliage with berries, holly etc. would be lovely on the **26th** (any earlier and it would wither). This should be bagged and left outside the front of school near the wreath sign. Thank you.**

Candles

Candles from The Callingwood Candle Company can also be ordered by completing the updated form sent on 10th November and returning to the same email address. Orders for the candles need to be in by **22nd November.**

Christmas Celebration Day – Wednesday 9th December

This year's Fayre has been reshaped to be COVID safe so instead of bringing in a bag of coins and making your way around all the stalls in the hall and the refreshment room we are having a day of Celebrations in the classroom and within the bubbles. Please see the attached poster with all details. (Poster attached to the newsletter) Payment of **£5** can be made on ParentPay.



Also just a reminder there is another way that you can help to raise money for your PTA just by spending money elsewhere and as Christmas is fast approaching and we are currently in another lockdown I'm sure your spending online has gone into overdrive!

You can register for Easyfundraising

at <https://www.easyfundraising.org.uk/causes/allsaintsrangemore/> Easy fundraising turns your every day online shopping into free donations for the school. Just start your online shop at easyfundraising then shop as normal. There are 4000+ retailers to choose from.

Thank you once again for your continued support especially in these unusual times.

Disclaimer: We are proud to have a newsletter which shares information with you for our parish, village, WI, social club, Rascals and our local communities. We do try to vet all items which go into

School information can be provided in different languages, large print, simple text only or Braille.

Please speak to Mrs. Gethin if you have a particular requirement.

