



HEADTEACHER'S AWARDS

Andrew M, Isaac W, Chloe, Natty, Theo

Red

★ Bronze

★ Silver

★ Gold



Bronze Cup



Silver Cup

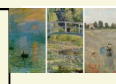
Gold Cup



Bronze Medal



Ayden for listening well, showing enthusiasm and developing team building skills in PE.



Joseph H for his fantastic learning attitude and for being a super Year 1 pupil who always gives 100%. Well done Joseph, keep it up!



Mila for her dedication to learning Her contributions to class discussions and her effort to improve her handwriting is incredible. Well done Mila



Annabel for such incredible positivity and determination to produce your best work and be the best classmate in every lesson.

PLEASE DON'T COME TO THE OFFICE UNLESS ABSOLUTELY ESSENTIAL

We remind parents that they are expected to not need to come to the school office as they can use e-mail, Class Dojo and the telephone to contact our office staff and can send any items in with children.

OFFICE CONTACT DETAILS

Please find below email addresses for the office if you have any queries.

asr-office@asr.jtmat.co.uk
e.hunt@asr.jtmat.co.uk

DIARY DATES

26.10.20	HALF TERM HOLIDAY
2.11.20	BACK TO SCHOOL
14.12.20	FLU VACCINATIONS ALL YEARS

Psalm 84:6 (NLT): When they walk through the Valley of Weeping, it will become a place of refreshing springs.



"A person who has good thoughts cannot ever be ugly. You can have a wonky nose and a crooked mouth and a double chin and stick-out teeth, but if you have good thoughts they will shine out of your face like sunbeams and you will always look lovely." -

Roald Dahl

Quote the Week

WEEK COMMENCING 19.10.2020

Monday	
Tuesday	CLASS 1 AND 2 - POPCORN AND PJ NIGHT
Wednesday	
Thursday	VIRTUAL OPEN DAY CLASS 3 AND 4 - POPCORN AND PJ NIGHT DEADLINE FOR ACADEMY PHOTOGRAPH ORDERS
Friday	LAST DAY BEFORE HALF TERM

THIS WEEK IN FOCUS

Our penultimate week of this half term has been really superb. Our 'Teams' parents evenings worked brilliantly and staff were happy to share how wonderfully everyone has settled in, their assessment outcomes and needs in order to target any learning gaps for the future.

As we can't have an open day we have made a film this week to share with prospective parents ready for a virtual Q&A next week. We look forward to meeting everyone. Well done to our children for all their hard work and Go-Pro Ralph! Please share our open day flyer far and wide – it's also on Twitter so you can retweet!



We are thrilled to tell you that Mrs Evans has achieved her Masters in Education (Early Years). This is a huge amount of work and we are really proud of her achievement - it is wonderful to have three hugely talented class teachers across our Forest Family Early Years provision.

We look forward to our cinema nights next week, Mrs Gethin and Mrs Jones are finding out their best PJs!

We will complete our final week with a Forest Family worship which will include our Fruits of the Spirit awards too.

We hope that you have a lovely weekend.

Mrs C Gethin.

SPOOKTACULAR

FILM NIGHT

After School PJ & Popcorn
ALL COVID RULES WILL BE ENFORCED!
EVERYONE WILL BE STAYING IN THEIR BUBBLES!

K51 Night - Tuesday 20th October 3:15 - 5pm
Room on the Green & the Legend of Sooty Sooty
K52 Night - Thursday 22nd October 3:15 - 5:15pm
The Addams Family (2019) PG


E3 Ticket - Reserved & paid through ParentPay
(Ticket includes a drink, a bag of popcorn and a bag of sweets)

Arrival - Straight from school
Please check your collection time - Collection from normal bubble classroom points

Don't forget to come in your PJs to school on the day, but remember... it can get warm, so if you come in a onesie put a shirt underneath. You can bring a cushion for your chair.

WE ARE LOOKING FORWARD TO -

Please share with family and friends.





VIRTUAL
Open Morning **Thursday 22nd October**

If you are interested in attending our open morning this year we will:

- Give you a link to a video of our school taking you on a virtual tour
- Offer a Zoom at 10am for questions and answers with the offer of an individual phone call to follow up any further, family specific questions.
- **Please ensure we have your email address so we can send you the link to the video tour and Zoom Q&A. We so look forward to meeting you!**

Mrs Charlene Gethin (Executive Headteacher)



RECEPTION APPLICATIONS FOR SEPTEMBER 2021

The application process for a place in Reception Class at All Saints Primary School for September 2021 will open on 01 November 2020. The closing date for applications is 15 January 2021.

Parents are invited to apply online via the following link (www.staffordshire.gov.uk/admissions).

RALPH'S SECRET READING CLUB

Each week a bubble will be chosen and the teacher will choose 3 children to receive a golden ticket to come and read with Ralph and myself. We will share the children's books and Ralph's new Pug choices. Children will be chosen by consistently trying their hardest and being kind and thoughtful. This will start after half term.



USEFUL INFORMATION



The Wellbeing Clinic - Attached to the newsletter is a leaflet about the Clinic which may be useful for adults facing challenges with emotional wellbeing.

They offer support to those suffering with low mood, anxiety, stress or panic. They are a self-referral service who cover the Staffordshire area, in particular, Tamworth, Lichfield, Burntwood, Stafford, Cannock, Seisdon, Burton and Uttoxeter. They offer Cognitive Behavioural Therapy and Counselling.

Once an individual contacts the service on 0300 303 0923, they are asked to leave their name and number and they will be called as soon as possible to proceed with their referral. Once they are registered onto the system, they aim to offer a telephone assessment appointment within 5 days to gain an understanding of the presenting problem before discussing the options available.

They are currently offering digital workshops aimed at helping adult cope better in the time of Coronavirus, as well as coming out of shielding.

ANYTHING ELSE YOU NEED TO KNOW

COVID REQUIREMENT UPDATE - EXTRA LAYERS

We appreciate that the temperature is dropping but we are still expected to have windows open for good ventilation and this is likely to continue throughout the winter months. Please ensure your child has layers for their clothing, such as under layers (vest / t-shirt / skins) under their top etc. in order to prevent them being cold. A second jumper even! We realise not all parents will be pleased about this and it's not ideal, but this is one of our key expectations as well as hand washing and cleaning regimes. Thank you for your understanding. We will look to what we can do with our heating to help such as it being on for longer or higher if this is safe.

Parents and families, you have been brilliant with our one way system at Rangemore and our staggered system at Needwood but we need to tighten further. Please still stand on the crosses and do not talk to each other (other than from the crosses), taking care as to how to go past each other. It generally looks brilliant but we just want to provide key reminders as the term goes on. Thank you.

DO NOT COME TO THE OFFICE UNLESS ABSOLUTELY ESSENTIAL PLEASE

We remind parents that they are expected to not need to come to the school office as they can use e-mail, Class Dojo and telephone to contact our office staff and can send any items in with children.

If we feel that what you have come to the office for wasn't essential, then we will tell you this and please respect this. Thank you.

We realise parents have been generous with books and as such brought them in. This has been a stark reminder of the need for us all to consider our plans. Parents are not coming in school unless key plans for exceptional reasons so please, anything like this needs to be brought to the door and staff can take in. The responsibility for this lies with us all as our minds are full of so much aren't they!

BOOK THANK YOU

Thank you so very much for all the books for the school in Derby which burnt down. We appreciate your generosity and, when it is ready to go, will send a photograph of the mountain! Thank you again.

OFFICE CONTACT DETAILS

Please find below the email address for the office if you have any queries. Save them in your contacts and then they are always handy for you to find.

asr-office@asr.jtmat.co.uk
e.hunt@asr.jtmat.co.uk

CLASS DOJO COMMUNICATION

We are thrilled that our communication mechanisms seem to be meeting the vast majority of parent's needs (we appreciate some think that the newsletter is too long which is why we have split it up into sections including 'what you need to know' so that you can read what is necessary and leave the rest.)

We also realise that some parents prefer to communicate on the Dojo App instead of e-mails. This means that many messages for the office are going to teachers and senior leaders. So, in order to refine how this works we have set up an office contact on each Dojo so that any office / admin items can be directed to them to save teaching staff and senior leaders copying and pasting messages to the office or chasing answers. We hope this is a refinement which will be useful both for parents and school staff. **You can still use email and this is our preferred method of contact for office staff.**

ACADEMY PHOTOGRAPHY

Photograph proofs were handed out earlier in the week. The deadline for orders to be handed back to the office is 22nd October. Thank you.

CLOTHING 4 U

If you have any outstanding orders with Clothing 4 U, they have confirmed these will be dropped off at school in the near future.

LUNCHES

Next week's menu will be:-

Monday	Pizza with Dough Balls
Tuesday	Wallace and Gromit Tomato Pasta
Wednesday	Roast
Thursday	Lasagne
Friday	Golden Fish Fingers and Chips



USEFUL INFORMATION

PRIME MINISTER ANNOUNCES NEW LOCAL COVID ALERT LEVELS

https://www.gov.uk/government/news/prime-minister-announces-new-local-covid-alert-levels?utm_source=13%20October%202020%20C19&utm_medium=Daily%20Email%20C19&utm_campaign=DfE%20C19



I have unpicked the key elements:

A postcode checker on GOV.UK shows which alert level applies in each area and the NHS COVID-19 app will also direct people to this information.

Local COVID Alert Level – Medium

This is for areas where national restrictions continue to be in place. This means:

All businesses and venues can continue to operate, in a COVID-19 secure manner, other than those that remain closed by law, such as nightclubs.

Certain businesses selling food or drink on their premises are required to close between 10pm and 5am.

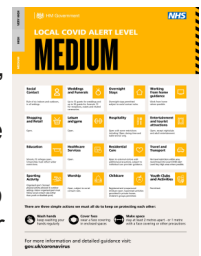
Businesses and venues selling food for consumption off the premises can continue to do so after 10pm as long as this is through delivery service, click-and-collect or drive-thru.

Schools, universities and places of worship remain open.

Weddings and funerals can go ahead with restrictions on the number of attendees.

Organised indoor sport and exercise classes can continue to take place, provided the 'Rule of Six' is followed.

People must not meet in groups larger than 6, indoors or outdoors.



Local COVID Alert Level – High

This is for areas with higher levels of infections. This means the following additional measures are in place:

People must not meet with anybody outside their household or support bubble in any indoor setting, whether at home or in a public place.

People must not meet in a group of more than 6 outside, including in a garden or other space.

People should aim to reduce the number of journeys they make where possible. If they need to travel, they should walk or cycle where possible, or to plan ahead and avoid busy times and routes on public transport.



Local COVID Alert Level – Very High

This is for areas with very high levels of infections. The Government will set a baseline of measures for any area in this local alert level. Consultation with local authorities will determine additional measures.

The baseline means the below additional measures are in place:

Pubs and bars must close, and can only remain open where they operate as if they were a restaurant – which means serving substantial meals, like a main lunchtime or evening meal. They may only serve alcohol as part of such a meal.

Wedding receptions are not allowed.

People must not meet with anybody outside their household or support bubble in any indoor or outdoor setting, whether at home or in a public space. The 'Rule of Six' applies in open public spaces like parks and beaches.

People should try to avoid travelling outside the 'Very High' area they are in, or entering a 'Very High' area, other than for things like work, education, accessing youth services, to meet caring responsibilities or if they are in transit.

People should avoid staying overnight in another part of the UK if they are resident in a 'Very High' area, or avoid staying overnight in a 'Very High' area if they are resident elsewhere.



COPIES OF THE AREA ALERT SYSTEM ARE ATTACHED TO THE NEWSLETTER.



All Saints PTA 50/50 Club

Your chance to win a monthly cash prize! – ‘You have to be in it to win it’

What is the 50/50 Club? - The 50/50 club is a monthly prize draw run by the PTA where 50% of cash generated makes up the monthly prizes and 50% goes to the PTA towards essential and fun resources for your children and the school.

How does it work? – Each member pays £10 for 10 draws from October to July, equivalent to £1.00 per month, giving you the chance to win cash in our monthly prize draw. There is no limit to the amount of entries you can have so if you wish you could buy as gifts for family members.

Who can enter? – Membership is open to all parents, carers, staff, family and friends. Anyone 16 years and over can join.

How do I pay? – You can pay on ParentPay, in multiples of £10 depending on how many chances you want in the draw.

When will the draw take place? – The draw will take place at the end of each month and you will be notified by the school if you are lucky. It will also be put on the 1st newsletter of the next month.

What could I win? - **1st Prize = 40%, 2nd Prize = 5%, 3rd Prize = 5%**

The amount that you could win depends on how many draws are sold.

The more who enter the greater the monthly prize!

The deadline for October's Prize Draw is 23rd October. Numbers will be allocated shortly afterwards but before the actual draw.

Thank you for your continued support.



CHURCH/COMMUNITY

BRANSTON GOLF CLUB - HALF TERM HOLIDAY CLUB

A flyer is attached to the newsletter giving parents information about a half term holiday club. The link below allows parents to book the holiday club and find out more information.

<https://www.branstonclub.co.uk/health-fitness/creche/october-half-term-holiday-club/>



LICHFIELD CATHEDRAL

REMEMBRANCE 2020

Join us this Remembrance-tide as we mark the season with a programme of dedicated services, the reflective memorial installation 'The Leaves of The Trees' by Artist in Residence, Peter Walker and the return of Poppy Fields, re-imagined for 2020 by artistic collaboration Luxmuralis.

REMEMBRANCE SUNDAY 8 NOVEMBER
Together in Worship | Join us in the Cathedral or online for our dedicated Remembrance Day services:

8:00 Traditional Language Eucharist (Live Stream only)
10:30 Service of Remembrance to include National Silence | [PRE - BOOK HERE](#)
15:00 Solemn Requiem Eucharist for the Fallen
16:15 Evening Prayer (Live Stream only)
17:30 The final evening of Poppy Fields | [BOOK TICKETS HERE](#)

Please note: Attendance to the 10:30 Service of Remembrance will need to be pre-booked and tickets are limited.

FIND OUT MORE

Follow the link below to find out more information -

<https://www.lichfield-cathedral.org/what-s-on/remembrance-2020>

Disclaimer: We are proud to have a newsletter which shares information with you for our parish, village, WI, social club, Rascals and our local communities. We do try to vet all items which go into

School information can be provided in different languages, large print, simple text only or Braille.

Please speak to Mrs. Gethin if you have a particular requirement.

